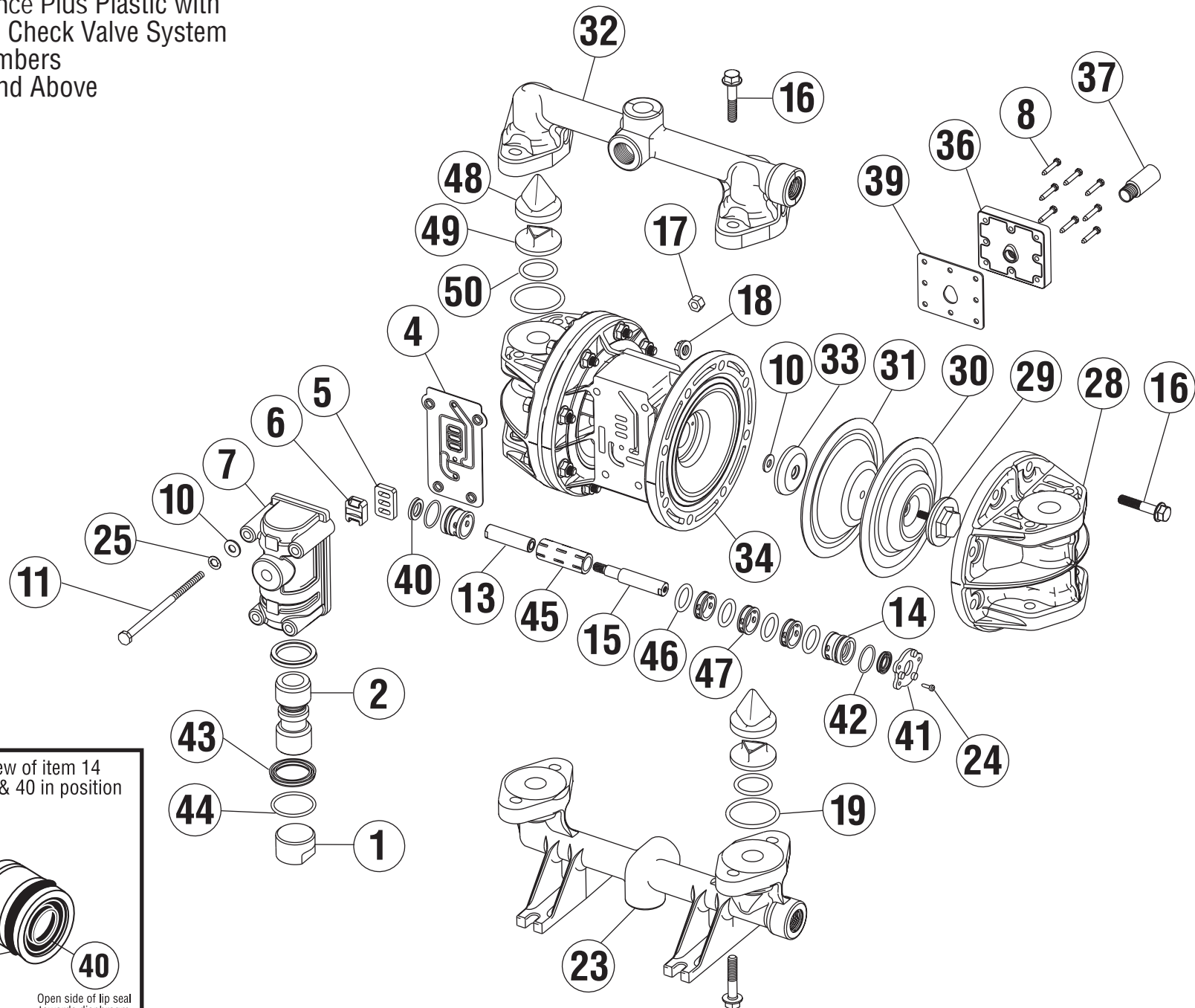
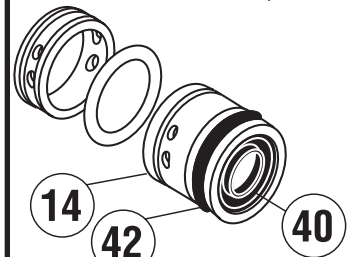


1/2" MODEL

Performance Plus Plastic with
Max-Pass Check Valve System
Serial Numbers
104560 and Above



Enlarged view of item 14
with items 42 & 40 in position



Open side of lip seal
towards diaphragm

MAX-PASS VALVE CONFIGURATION

ITEM	DESCRIPTION	QTY PER PUMP	MODELS	PART NO.	MATERIAL
1	AIR VALVE END PLUG	1	ALL MODELS	11703-60	POLYPRO
2	AIR VALVE SPOOL	1	ALL MODELS	10480-31	ACETAL
4	AIR VALVE GASKET	1	ALL MODELS	12116-19	NITRILE
5	SHUTTLE PLATE	1	ALL MODELS	10416-77	CERAMIC
6	SHUTTLE	1	ALL MODELS	10415-00	SPECIAL
7	AIR VALVE BODY	1	ALL MODELS	11614-60	POLYPRO
8	SLT WSHD (#8 X 1") SCREW	8	ALL MODELS	12525-26	SS
10	FLAT WASHER	6	ALL MODELS	12300-26	SS
11	CAP SCREW (1/4" X 4-1/2")	4	ALL MODELS	12513-26	SS
13	DIAPHRAGM ROD (Short)	1	ALL MODELS	*	SS
14	END SPACER (Pilot Sleeve)	2	ALL MODELS	10204-40	POLYPRO
15	DIAPHRAGM ROD (Long)	1	ALL MODELS	*	SS
16	FLANGE BOLT (5/16" X 1-5/8")	24	ALL MODELS	12539-26	SS
17	HEX NUT (1/4" - 20)	4	ALL MODELS	12600-26	SS
18	FLANGE HEX NUT (5/16" - 18)	24	ALL MODELS	12608-26	SS
19	O-RING (Manifolds)	4	PB, NB, CB PE, KE PV, KV, NV, CV	11936-11 11936-15 11936-82	NITRILE EPDM VITON (FDA)
23	SUCTION MANIFOLD (NPT / BSP COMPATIBLE)	1	P -PUMPS N -PUMPS C -PUMPS K -PUMPS	10553-40 10553-42 10553-46 10553-56	POLYPRO NYLON COND. NYLON PVDF
24	SELF TAP SCREW (#6 X 1/2")	6	ALL MODELS	12510-26	SS
25	LOCK WASHER	4	ALL MODELS	12350-26	SS
28	OUTER CHAMBER	2	P -PUMPS N -PUMPS C -PUMPS K -PUMPS	10722-40 10722-42 10722-46 10722-56	POLYPRO NYLON COND. NYLON PVDF
29	OUTER DIAPHRAGM PLATE	2	P -PUMPS N -PUMPS C -PUMPS K -PUMPS	11200-40 11200-42 11200-46 11200-56	POLYPRO NYLON COND. NYLON PVDF
30	OVERLAY	2	PT,KT,NT,CT	11400-59	PTFE
31	DIAPHRAGM	2	PB,NB,CB PE, KE PV,KV,NV,CV	10600-19 10600-23 10600-13	GEOLAST SANTOPRENE VITON

NOTES:

1. SS = STAINLESS STEEL

ITEM	DESCRIPTION	QTY PER PUMP	MODELS	PART NO.	MATERIAL
32	DISCHARGE MANIFOLD (NPT / BSP COMPATIBLE)	1	P -PUMPS N -PUMPS C -PUMPS K -PUMPS	10557-40 10557-42 10557-46 10557-56	POLYPRO NYLON COND. NYLON PVDF
33	INNER DIAPHRAGM PLATE	2	P -PUMPS N -PUMPS C -PUMPS K -PUMPS	11100-40 11100-42 11100-46 11100-56	POLYPRO NYLON COND. NYLON PVDF
34	INTERMEDIATE	1	ALL MODELS	11521-60	POLYPRO
36	MUFFLER PLATE	1	ALL MODELS	13111-60	POLYPRO
37	EXTERNAL MUFFLER	1	ALL MODELS	13008-00	SPECIAL
39	GASKET (Muffler Plate)	1	ALL MODELS	12117-19	NITRILE
40	LIP SEAL (Diaphragm Rod)	2	ALL MODELS	12000-76	NITRILE
41	RETAINING PLATE	2	ALL MODELS	12708-40	POLYPRO
42	O-RING (End Spacer)	2	ALL MODELS	11923-11	NITRILE
43	AIR VALVE LIP SEAL	2	ALL MODELS	12003-76	NITRILE
44	O-RING (Valve End Plug)	1	ALL MODELS	11913-11	NITRILE
45	PILOT SLEEVE	1	ALL MODELS	10105-31	ACETAL
46	O-RING (Pilot Sleeve)	4	ALL MODELS	11920-16	URETHANE
47	INNER SPACER	3	ALL MODELS	10203-40	POLYPRO
48	MAX-PASS VALVE	4	PB, NB, CB PE, KE PV, KV, NV, CV	10908-11 10908-15 10908-82	NITRILE EPDM VITON (FDA)
49	MAX-PASS BACK-UP	4	P -PUMPS N -PUMPS K -PUMPS	10909-40 10909-42 10909-56	POLYPRO NYLON PVDF
50	O-RING (Max-Pass Valve)	4	PB, NB, CB PE, KE PV, KV, NV, CV	11938-11 11938-15 11938-82	NITRILE EPDM VITON (FDA)

* NOTE: DIAPHRAGM ROD AVAILABLE ONLY AS AN ASSEMBLY.

DIAPHRAGM ROD ASSEMBLY Items 13 & 15	1	ALL MODELS	33000-00	SS
---	---	------------	----------	----

OPTIONAL ASSEMBLIES AVAILABLE

AIR VALVE ASSEMBLY Items 1,2,4,5,6,7,43,44	1	ALL MODELS	42000-60	POLYPRO
PILOT SLEEVE ASSEMBLY Items 14,40,42,45,46,47	1	ALL MODELS	41000-00	VARIOUS

REPAIR KITS - WET END
Includes items 19, 31, 48, 49, 50 & (30 - Used in pumps built w/ PTFE)
To order a wet end repair kit, add "KIT" to the pump model. e.g. PB-05-M4 KIT

1/2" PERFORMANCE PLUS PLASTIC MODELS
MAX-PASS VALVE CONFIGURATION

JANUARY 2008