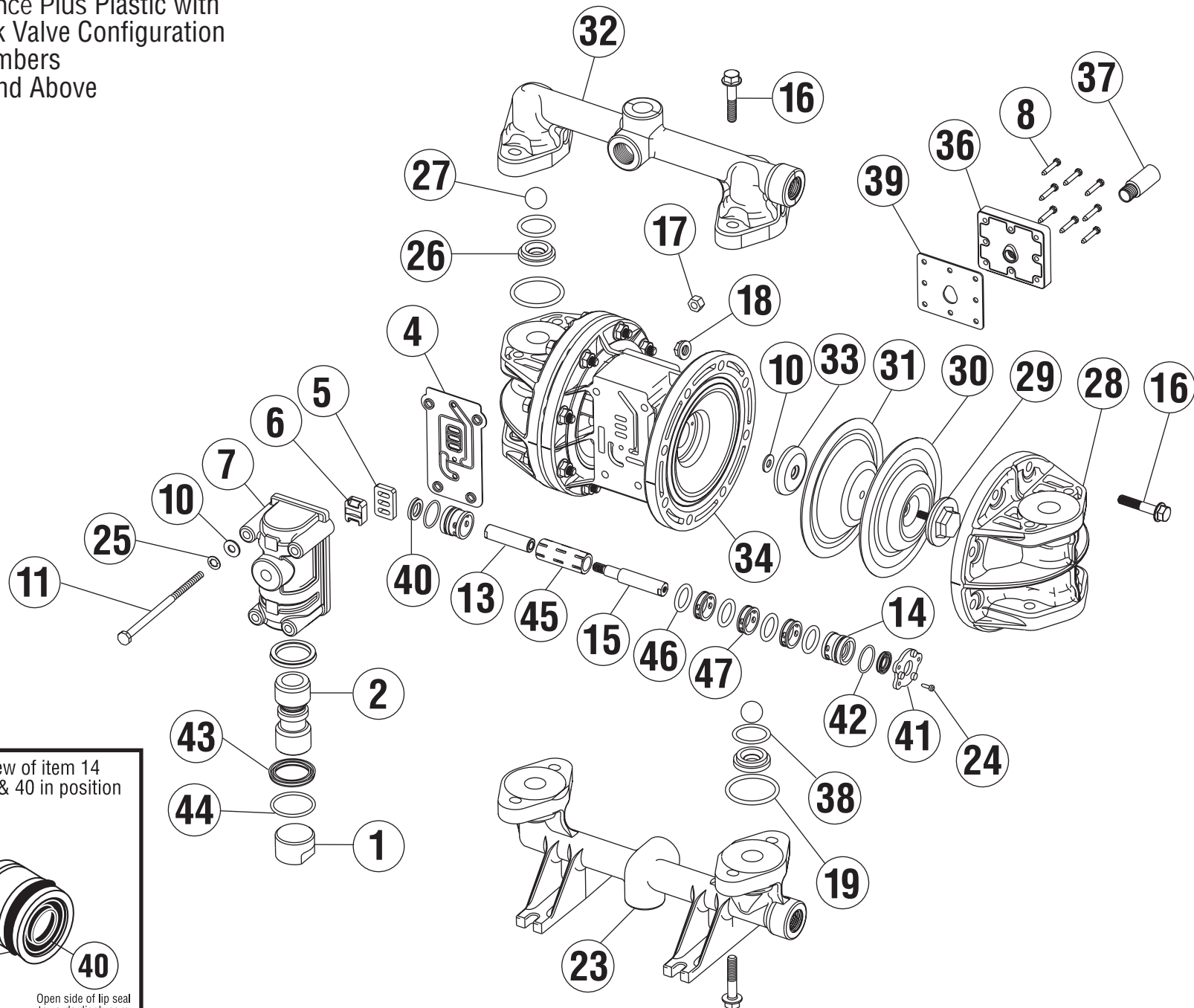
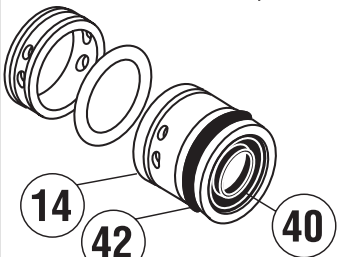


1/2" MODEL

Performance Plus Plastic with
Ball Check Valve Configuration
Serial Numbers
104560 and Above



Enlarged view of item 14
with items 42 & 40 in position



Open side of lip seal
towards diaphragm

BALL CHECK VALVE CONFIGURATION

ITEM	DESCRIPTION	QTY PER PUMP	MODELS	PART NO.	MATERIAL
1	AIR VALVE END PLUG	1	ALL MODELS	11703-60	POLYPRO
2	AIR VALVE SPOOL	1	ALL MODELS	10480-31	ACETAL
4	AIR VALVE GASKET	1	ALL MODELS	12116-19	NITRILE
5	SHUTTLE PLATE	1	ALL MODELS	10416-77	CERAMIC
6	SHUTTLE	1	ALL MODELS	10415-00	SPECIAL
7	AIR VALVE BODY	1	ALL MODELS	11614-60	POLYPRO
8	SLT WSHD SCREW (#8 X 1")	8	ALL MODELS	12525-26	SS
10	FLAT WASHER	6	ALL MODELS	12300-26	SS
11	CAP SCREW (1/4" X 4-1/2")	4	ALL MODELS	12513-26	SS
13	DIAPHRAGM ROD (Short)	1	ALL MODELS	*	SS
14	END SPACER (Pilot Sleeve)	2	ALL MODELS	10204-40	POLYPRO
15	DIAPHRAGM ROD (Long)	1	ALL MODELS	*	SS
16	FLNG BOLT(5/16" X 1-5/8")	24	ALL MODELS	12539-26	SS
17	HEX NUT (1/4" - 20)	4	ALL MODELS	12600-26	SS
18	FLNG HEX NUT (5/16" - 18)	24	ALL MODELS	12608-26	SS
19	O-RING (Manifolds)	4	PB, KB, NB, CB PT, KT, NT, CT PE, KE, NE, CE PV, KV, NV, CV	11936-11 11936-17 11936-15 11936-13	NITRILE PTFE EPDM VITON
23	SUCTION MANIFOLD	1	P -PUMPS K -PUMPS N -PUMPS C -PUMPS	10553-40 10553-56 10553-42 10553-46	POLYPRO PVDF NYLON COND. NYLON
24	SELF TAP SCREW (#6 X 1/2")	6	ALL MODELS	12510-26	SS
25	LOCK WASHER	4	ALL MODELS	12350-26	SS
26	VALVE SEAT	4	P -PUMPS K -PUMPS N, C -PUMPS	10906-40 10906-56 10906-56	POLYPRO PVDF PVDF
27	BALL	4	PB, KB, NB, CB PT, KT, NT, CT PE, KE, NE, CE PV, KV, NV, CV	11000-11 11000-45 11000-23 11000-13	NITRILE PTFE SANTO VITON
	STAINLESS STEEL	OPT	ALL MODELS	11000-26	SS
28	OUTER CHAMBER	2	P -PUMPS K -PUMPS N -PUMPS C -PUMPS	10720-40 10720-56 10720-42 10720-46	POLYPRO PVDF NYLON COND. NYLON
29	OUTER DIAPHRAGM PLATE	2	P -PUMPS K -PUMPS N -PUMPS C -PUMPS	11200-40 11200-56 11200-42 11200-46	POLYPRO PVDF NYLON COND. NYLON

ITEM	DESCRIPTION	QTY PER PUMP	MODELS	PART NO.	MATERIAL
30	OVERLAY	2	PT, KT, NT, CT	11400-59	PTFE
31	DIAPHRAGM	2	PB, KB, NB, CB PT, KT, NT, CT PE, KE, NE, CE PV, KV, NV, CV	10600-19 10600-23 10600-23 10600-13	GEOLAST SANTO SANTO VITON
32	DISCHARGE MANIFOLD	1	P -PUMPS K -PUMPS N -PUMPS C -PUMPS	10554-40 10554-56 10554-42 10554-46	POLYPRO PVDF NYLON COND. NYLON
33	INNER DIAPHRAGM PLT	2	P -PUMPS K -PUMPS N -PUMPS C -PUMPS	11100-40 11100-56 11100-42 11100-46	POLYPRO PVDF NYLON COND. NYLON
34	INTERMEDIATE	1	ALL MODELS	11521-60	POLYPRO
36	MUFFLER PLATE	1	ALL MODELS	13111-60	POLYPRO
37	EXTERNAL MUFFLER	1	ALL MODELS	13008-00	SPECIAL
38	O-RING (Valve Seat)	4	PB, KB, NB, CB PT, KT, NT, CT PE, KE, NE, CE PV, KV, NV, CV	11937-11 11937-17 11937-15 11937-13	NITRILE PTFE EPDM VITON
39	GASKET (Muffler Plate)	1	ALL MODELS	12117-19	NITRILE
40	LIP SEAL (Diaphragm Rod)	2	ALL MODELS	12000-76	NITRILE
41	RETAINING PLATE	2	ALL MODELS	12708-40	POLYPRO
42	O-RING (End Spacer)	2	ALL MODELS	11923-11	NITRILE
43	AIR VALVE LIP SEAL	2	ALL MODELS	12003-76	NITRILE
44	O-RING (Valve End Plug)	1	ALL MODELS	11913-11	NITRILE
45	PILOT SLEEVE	1	ALL MODELS	10105-31	ACETAL
46	O-RING (Pilot Sleeve)	4	ALL MODELS	11920-16	URETHANE
47	INNER SPACER (Pilot Sleeve)	3	ALL MODELS	10203-40	POLYPRO

*** NOTE: DIAPHRAGM ROD CAN ONLY BE PURCHASED AS AN ASSEMBLY.**

DIAPHRAGM ROD ASSEMBLY Items 13 & 15	1	ALL MODELS	33000-00	SS
---	---	------------	----------	----

OPTIONAL ASSEMBLIES AVAILABLE

AIR VALVE ASSEMBLY Items 1,2,4,5,6,7,43,44	1	ALL MODELS	42000-60	POLYPRO
---	---	------------	----------	---------

PILOT SLEEVE ASSEMBLY Items 14,40,42,45,46,47	1	ALL MODELS	41000-00	VARIOUS
--	---	------------	----------	---------

REPAIR KITS - WET END
Includes items 19, 26, 27, 31, 38 & (30 - Used in pumps built w/ PTFE)
To order a wet end repair kit, add "KIT" to the pump model. E.G. PB-05 KIT

NOTES:

1. SS = STAINLESS STEEL