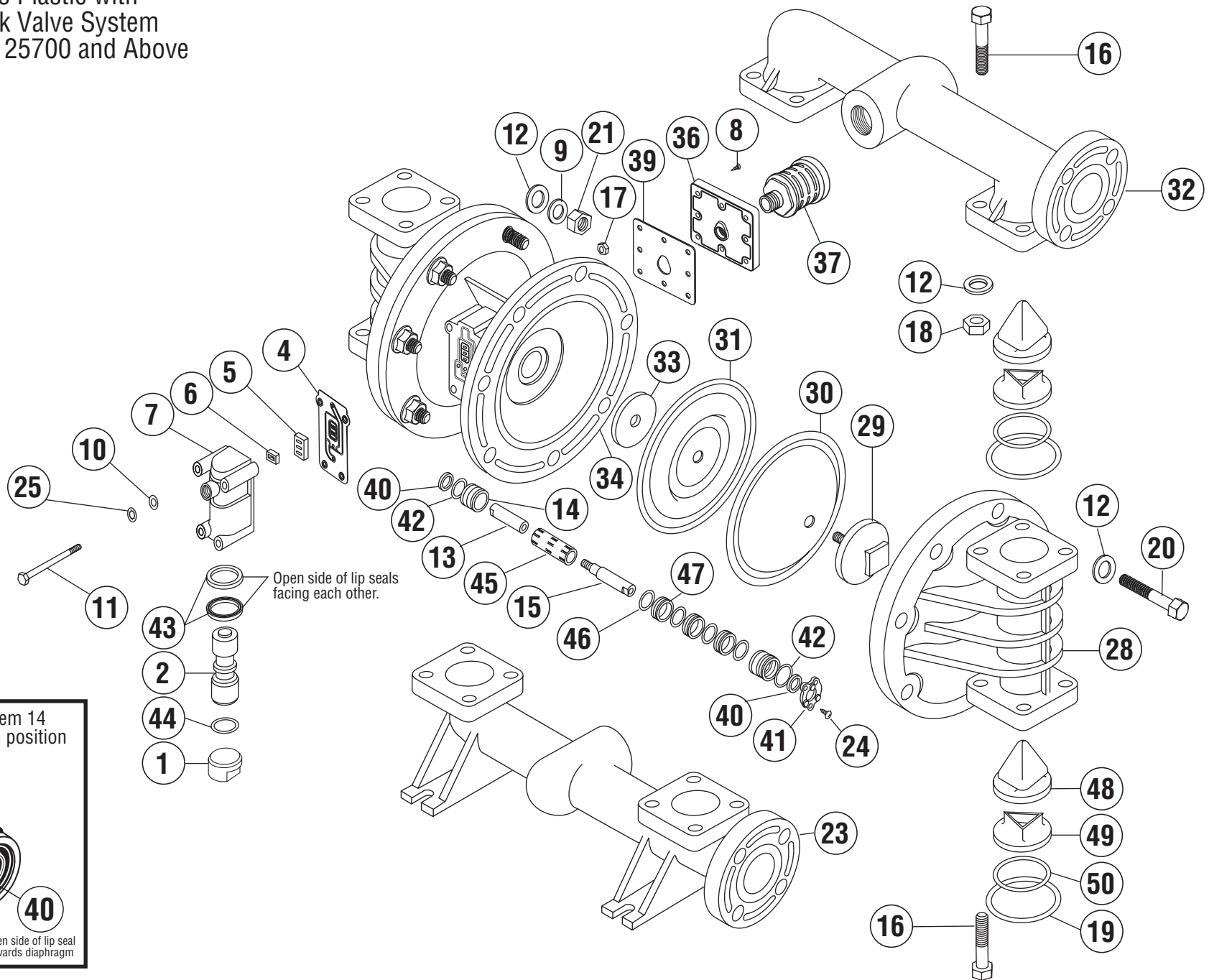


1" MODEL

Performance Plus Plastic with
Max-Pass™ Check Valve System
Serial Numbers 125700 and Above



**1" PERFORMANCE PLUS PLASTIC MODELS
MAX-PASS VALVE CONFIGURATION**

JANUARY 2008

ITEM	DESCRIPTION	QTY PER PUMP	MODELS	PART NO.	MATERIAL
1	AIR VALVE END PLUG	1	ALL MODELS	11703-60	POLYPRO
2	AIR VALVE SPOOL	1	ALL MODELS	10480-31	ACETAL
4	AIR VALVE GASKET	1	ALL MODELS	12116-19	NITRILE
5	SHUTTLE PLATE	1	ALL MODELS	10416-77	CERAMIC
6	SHUTTLE	1	ALL MODELS	10415-00	SPECIAL
7	AIR VALVE BODY	1	ALL MODELS	11614-60	POLYPRO
8	SLT WSHD (#8 X 1") SCREW	8	ALL MODELS	12525-26	SS
9	SPLIT LOCKWASHER	16	ALL MODELS	12316-26	SS
10	FLAT WASHER	4	ALL MODELS	12300-26	SS
11	CAP SCREW (1/4" X 5")	4	ALL MODELS	12512-26	SS
12	FLAT WASHER (0.875OD)	64	ALL MODELS	12314-26	SS
13	DIAPHRAGM ROD (Short)	1	ALL MODELS	*	SS
14	END SPACER (Pilot Sleeve)	2	ALL MODELS	10204-40	POLYPRO
15	DIAPHRAGM ROD (Pilot)	1	ALL MODELS	*	SS
16	BOLT (5/16" X 2-1/4")	16	ALL MODELS	12547-26	SS
17	HEX NUT (1/4" - 20)	4	ALL MODELS	12600-26	SS
18	HEX NUT (5/16" - 18)	16	ALL MODELS	12601-26	SS
19	O-RING (Manifolds)	4	PB PT, KT PE, KE PV, KV	11940-11 11940-17 11940-15 11940-82	NITRILE PTFE EPDM VITON(FDA)
20	BOLT (3/8" X 2-1/4")	16	ALL MODELS	12544-26	SS
21	HEX NUT (3/8" - 16)	16	ALL MODELS	12602-26	SS
23	SUCTION MANIFOLD	1	P -PUMPS K -PUMPS	10555-40 10555-56	POLYPRO PVDF
24	SELF TAP SCREW (#6 X 1/2")	6	ALL MODELS	12510-26	SS
25	LOCK WASHER	4	ALL MODELS	12350-26	SS
28	OUTER CHAMBER	2	P -PUMPS K -PUMPS	10723-40 10723-56	POLYPRO PVDF
29	OUTER DIAPHRAGM PLATE	2	P -PUMPS K -PUMPS	11204-40 11204-56	POLYPRO PVDF
30	OVERLAY	2	PT, KT	11406-59	PTFE
31	DIAPHRAGM	2	PB PE, KE, PT, KT PV, KV	10605-19 10605-23 10605-13	GEOLAST SANTO VITON

ITEM	DESCRIPTION	QTY PER PUMP	MODELS	PART NO.
32	DISCHARGE MANIFOLD	1	P -PUMPS K -PUMPS	10567-40 10567-56
33	INNER DIAPHRAGM PLATE	2	ALL MODELS	11104-25
34	INTERMEDIATE	1	ALL MODELS	11522-60
36	MUFFLER PLATE	1	ALL MODELS	13111-60
37	EXTERNAL MUFFLER	1	ALL MODELS	13000-00
39	GASKET, (Muffler Plate)	1	ALL MODELS	12117-19
40	LIP SEAL (Dia. Rod)	2	ALL MODELS	12000-76
41	RETAINING PLATE	2	ALL MODELS	12708-40
42	O-RING (End Spacer)	2	ALL MODELS	11923-11
43	AIR VALVE LIP SEAL	2	ALL MODELS	12003-76
44	O-RING (Valve end plug)	1	ALL MODELS	11913-11
45	PILOT SLEEVE	1	ALL MODELS	10105-31
46	O-RING (Pilot Sleeve)	4	ALL MODELS	11920-16
47	INNER SPACER (Pilot)	3	ALL MODELS	10203-40
48	MAX-PASS VALVE	4	PB PE,KE,PT,KT PV,KV	10911-11 10911-15 10911-82
49	MAX-PASS BACK-UP	4	P-PUMPS K-PUMPS	10912-40 10912-56
50	O-RING MAX-PASS VALVE	4	PB PE,KE,PT,KT PV,KV	11936-11 11936-15 11936-82

NOTE: DIAPHRAGM ROD CAN ONLY BE PURCHASED AS AN ASSEMBLY.

DIAPHRAGM ROD ASSEMBLY Items 13 & 15	1	ALL MODELS	32000-00
---	---	------------	----------

OPTIONAL ASSEMBLIES AVAILABLE

AIR VALVE ASSEMBLY Items 1,2,4,5,6,7,43,44	1	ALL MODELS	42000-60
---	---	------------	----------

PILOT SLEEVE ASSEMBLY Items 14, 40, 42, 45,46, 47	1	ALL MODELS	41000-00
--	---	------------	----------

REPAIR KITS - WET END

Includes items 19, 31, 48, 49, 50 & (30 - Used in pumps built w/ PTFE)
To order a wet end repair kit, add "KIT" to the pump model. e.g. PB-10-

NOTE:

1. PS = PLATED STEEL SS = STAINLESS STEEL

1" PERFORMANCE PLUS PLASTIC MODELS
MAX-PASS VALVE CONFIGURATION

JANUARY 2008

MATERIAL
POLYPRO
PVDF
PS
POLYPRO
POLYPRO
SPECIAL
NITRILE
NITRILE
POLYPRO
NITRILE
NITRILE
NITRILE
ACETAL
URETHANE
POLYPRO
NITRILE
EPDM
VITON (FDA)
POLYPRO
KYNAR
NITRILE
EPDM
VITON (FDA)

SS

POLYPRO

VARIOUS

M4 KIT