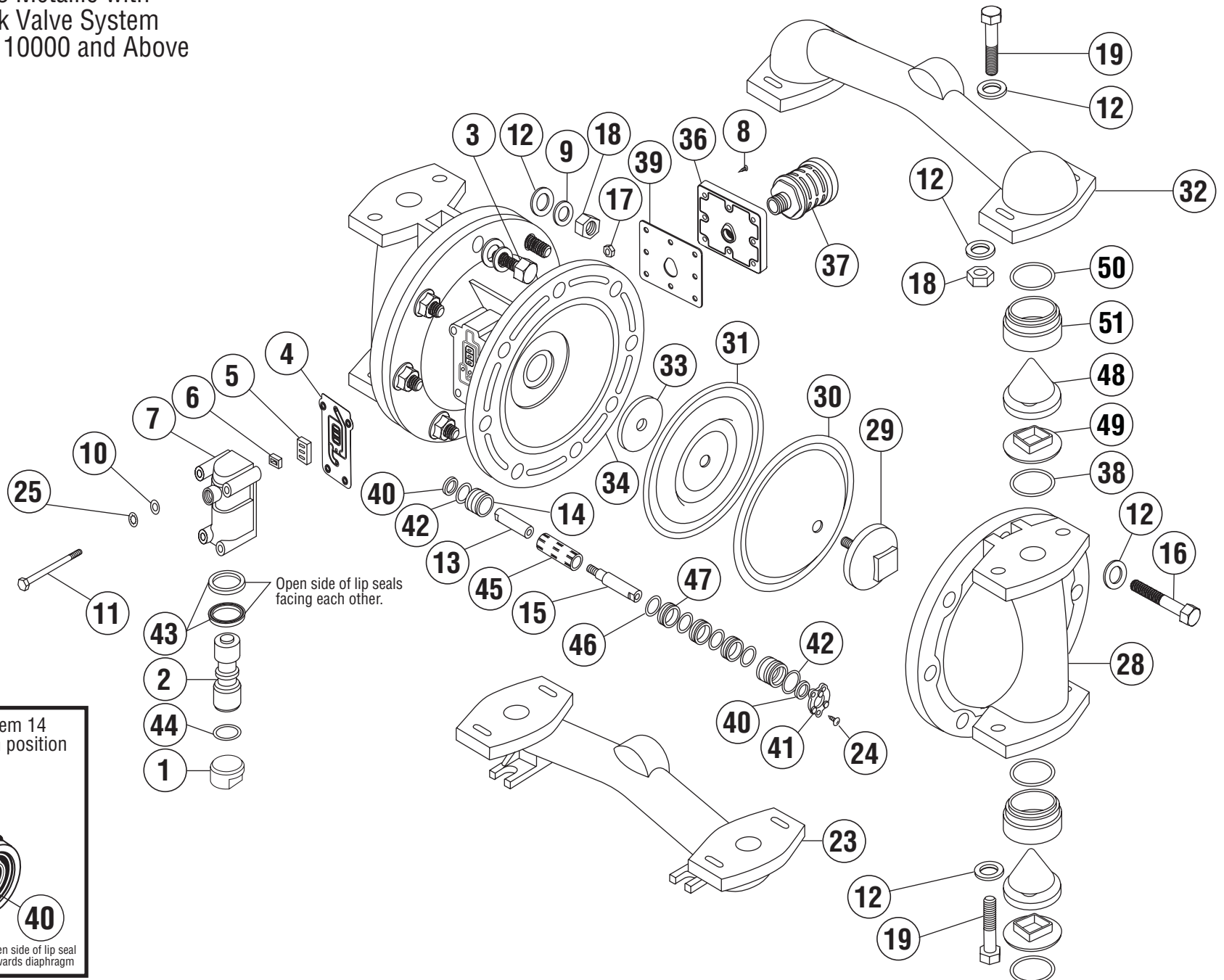


1" MODEL

Performance Plus Metallic with
Max-Pass™ Check Valve System
Serial Numbers 110000 and Above



1" PERFORMANCE PLUS METALLIC MODELS

JANUARY 2008

MAX-PASS VALVE CONFIGURATION

ITEM	DESCRIPTION	QTY PER PUMP	MODELS	PART NO.	MATERIAL
1	AIR VALVE END PLUG	1	ALL MODELS	11703-60	POLYPRO
2	AIR VALVE SPOOL	1	ALL MODELS	10480-31	ACETAL
3	BOLT (3/8" X 1-1/2")	4	ALL MODELS	12534-26	SS
4	AIR VALVE GASKET	1	ALL MODELS	12116-19	NITRILE
5	SHUTTLE PLATE	1	ALL MODELS	10416-77	CERAMIC
6	SHUTTLE	1	ALL MODELS	10415-00	SPECIAL
7	AIR VALVE BODY	1	ALL MODELS	11614-60	POLYPRO
8	SLT WSHD (#8 X 1") SCREW	8	ALL MODELS	12525-26	SS
9	SPLIT LOCK WASHER	16	ALL MODELS	12316-26	SS
10	FLAT WASHER	4	ALL MODELS	12300-26	SS
11	CAP SCREW (1/4" X 5")	4	ALL MODELS	12512-26	SS
12	FLAT WASHER (0.875OD)	44	ALL MODELS	12314-26	SS
13	DIAPHRAGM ROD (Short)	1	ALL MODELS	*	SS
14	END SPACER (Pilot Sleeve)	2	ALL MODELS	10204-40	POLYPRO
15	DIAPHRAGM ROD (Long)	1	ALL MODELS	*	SS
16	BOLT (3/8" X 2")	12	ALL MODELS	12545-26	SS
17	HEX NUT (1/4" - 20)	4	ALL MODELS	12600-26	SS
18	HEX NUT (3/8" - 16)	20	ALL MODELS	12602-26	SS
19	BOLT (3/8" x 2 1/2")	8	ALL MODELS	12544-26	SS
23	SUCTION MANIFOLD (NPT)	1	A -PUMPS	10526-20	AL
			S -PUMPS	10526-26	SS
	SUCTION MANIFOLD (BSP)		A -PUMPS	10527-20	AL
			S -PUMPS	10527-26	SS
24	SELF TAP SCREW (#6 X 1/2")	6	ALL MODELS	12510-26	SS
25	LOCK WASHER	4	ALL MODELS	12350-26	SS
28	OUTER CHAMBER	2	A -PUMPS	10721-20	AL
			S -PUMPS	10721-26	SS
29	OUTER DIAPHRAGM PLATE	2	A -PUMPS	11207-20	AL
			S -PUMPS	11207-26	SS
30	OVERLAY	2	AT,SP	11406-59	PTFE
31	DIAPHRAGM	2	AB, SB	10605-19	GEOLAST
			AE,SE,AT,SP	10605-23	SANTO
			AV, SV	10605-13	VITON
32	DISCHARGE MANIFOLD (NPT)	1	A -PUMPS	10529-20	AL
			S -PUMPS	10529-26	SS
	DISCHARGE MANIFOLD (BSP)		A -PUMPS	10530-20	AL
			S -PUMPS	10530-26	SS
33	INNER DIAPHRAGM PLT	2	ALL MODELS	11104-25	PS
34	INTERMEDIATE	1	ALL MODELS	11522-60	POLYPRO
36	MUFFLER PLATE	1	ALL MODELS	13111-60	POLYPRO
37	EXTERNAL MUFFLER	1	ALL MODELS	13007-00	SPECIAL

ITEM	DESCRIPTION	QTY PER PUMP	MODELS	PART NO.	MATERIAL
38	O-RING (Max-Pass Back-up)	4	AB,SB AE,SE AV, SV	11946-11 11946-15 11946-13	NITRILE EPDM VITON
39	GASKET (Muffler Plate)	1	ALL MODELS	12117-19	NITRILE
40	LIP SEAL (Diaphragm Rod)	2	ALL MODELS	12000-76	NITRILE
41	RETAINING PLATE	2	ALL MODELS	12708-40	POLYPRO
42	O-RING (End Spacer)	2	ALL MODELS	11923-11	NITRILE
43	AIR VALVE LIP SEAL	2	ALL MODELS	12003-76	NITRILE
44	O-RING (Valve End Plug)	1	ALL MODELS	11913-11	NITRILE
45	PILOT SLEEVE	1	ALL MODELS	10105-31	ACETAL
46	O-RING (Pilot Sleeve)	4	ALL MODELS	11920-16	URETHANE
47	INNER SPACER (Pilot Sleeve)	3	ALL MODELS	10203-40	POLYPRO
48	MAX-PASS VALVE	4	AB,SB AE,SE AV, SV	10911-11 10911-15 10911-82	NITRILE-N EPDM VITON(FDA)
49	MAX-PASS BACK-UP	4	A -PUMPS S -PUMPS	10912-20 10912-26	AL SS
50	O-RING (Max-Pass Spacer)	4	AB,SB AE,SE AV, SV	11947-11 11947-15 11947-13	NITRILE-N EPDM VITON
51	MAX-PASS SPACER	4	A -PUMPS S -PUMPS	10922-20 10922-26	AL SS

*** NOTE: DIAPHRAGM ROD AVAILABLE ONLY AS AN ASSEMBLY.**

DIAPHRAGM ROD ASSEMBLY Items 13 & 15	1	ALL MODELS	32000-00	SS
---	---	------------	----------	----

OPTIONAL ASSEMBLIES AVAILABLY

AIR VALVE ASSEMBLY Items 1,2,4,5,6,7,43,44	1	ALL MODELS	42000-60	POLYPRO
---	---	------------	----------	---------

PILOT SLEEVE ASSEMBLY. Items 14,40,42,45,46,47	1	ALL MODELS	41000-00	VARIOUS
---	---	------------	----------	---------

REPAIR KITS - WET END Includes items 31, 38, 48, 49, 50 & (30 - Used in pumps built w/ PTFE) To order a wet end repair kit, add "KIT" to the pump model. e.g. AB-10 KIT				
---	--	--	--	--

NOTES:

1. PS = PLATED STEEL, SS = STAINLESS STEEL.