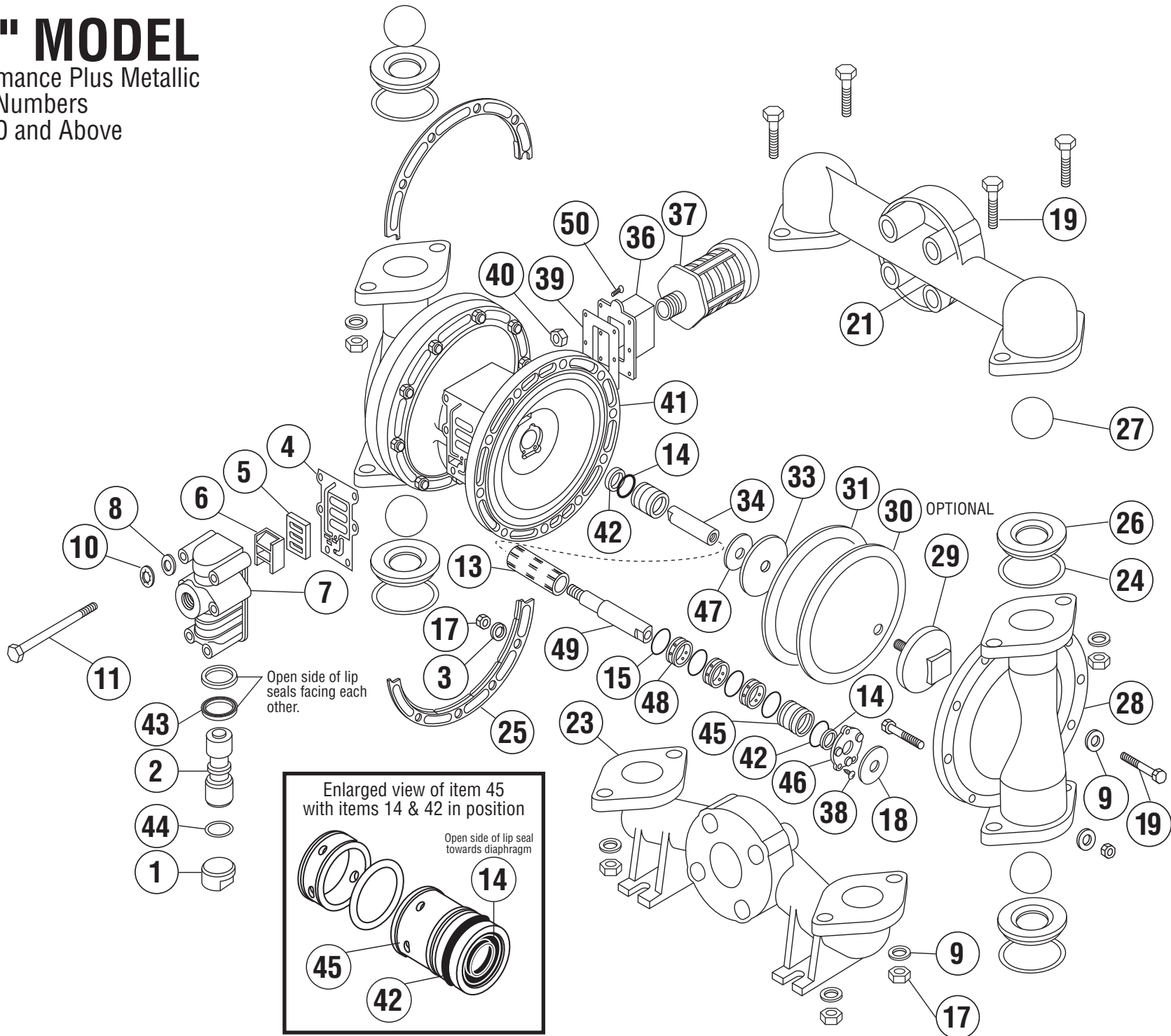


1 1/2" MODEL

Performance Plus Metallic
Serial Numbers
143700 and Above



1-1/2" PERFORMANCE PLUS METALLIC MODELS

JANUARY 2008

ITEM	DESCRIPTION	QTY PER PUMP	PUMP MODELS	PART NUMBER	MATERIAL
1	AIR VALVE END PLUG	1	ALL MODELS	11703-60	POLYPRO
2	AIR VALVE SPOOL	1	ALL MODELS	10481-31	ACETAL
3	COMPRESSION WASHER	20	ALL MODELS	12319-26	SS
4	AIR VALVE GASKET	1	ALL MODELS	12121-19	NITRILE
5	SHUTTLE PLATE	1	ALL MODELS	10450-77	CERAMIC
6	SHUTTLE	1	ALL MODELS	10430-00	SPECIAL
7	AIR VALVE BODY	1	ALL MODELS	11617-60	POLYPRO
8	FLAT WASHER	6	ALL MODELS	12300-26	SS
9	FLAT WASHER	28	ALL MODELS	12306-26	SS
10	LOCK WASHER (1/4")	6	ALL MODELS	12350-26	SS
11	CAP SCREW (1/4" X 6")	6	ALL MODELS	12515-26	SS
13	PILOT SLEEVE	1	ALL MODELS	10106-31	ACETAL
14	LIP SEAL (Diaphragm Rod)	2	ALL MODELS	12002-76	NITRILE
15	O-RING (Pilot Sleeve)	4	ALL MODELS	11919-16	URETHANE
17	HEX NUT (1/2" - 13)	28	ALL MODELS	12604-26	SS
18	BUMPER	2	ALL MODELS	12317-16	URETHANE
19	CAP SCREW (1/2" X 2-1/2")	28	ALL MODELS	12522-26	SS
21	DISCHARGE MANIFOLD, FLANGE	1	AB, AE, AT SB, SE, SP	10522-20 10522-26	AL 316 SS
23	SUCTION MANIFOLD, FLANGE	1	AB, AE, AT SB, SE, SP	10516-20 10516-26	AL 316 SS
24	O-RING (Valve Seat)	4	AB, SB AT, SP AE, SE	11926-11 11926-17 11926-15	NITRILE PTFE EPDM
25	POWER RING (Set)	2	ALL MODELS	12812-26SET	SS
26	VALVE SEAT	4	AB, AE AT SB, SE, SP	10918-40 10918-42 10918-26	POLYPRO NYLON 316 SS
27	BALL	4	AB, SB AT, SP AE, SE	11004-11 11004-45 11004-23	GEOLAST PTFE SANTO
	BALL, HEAVY WEIGHT	OPT OPT	HIGH VISCOSITY ALL MODELS	11004-22 11004-26	NITRILE SS
28	OUTER CHAMBER	2	AB, AE, AT SB, SE, SP	10724-20 10724-26	AL 316 SS
29	OUTER DIAPHRAGM PLATE	2	AB, AE, AT SB, SE, SP	11211-20 11211-26	AL 316 SS
30	OVERLAY	2	AT, SP	11403-59	PTFE

ITEM	DESCRIPTION	QTY PER PUMP	PUMP MODELS	PART NUMBER	MATERIAL
31	DIAPHRAGM	2	AB, SB ALL OTHERS -X45 MODELS	10603-19 10603-23 10603-86	GEOLAST SANTO COND. SANTO
		OPT			
33	INNER DIAPHRAGM PLATE	2	ALL MODELS	11103-25	PS
34	DIAPHRAGM ROD (Short)	1	ALL MODELS	*	SS
36	MUFFLER PLATE	1	ALL MODELS	13107-60	POLYPRO
37	EXTERNAL MUFFLER	1	ALL MODELS	13001-00	SPECIAL
38	SCREW (#6 X 3/4")	6	ALL MODELS	12549-26	SS
39	GASKET (Muffler Plate)	1	ALL MODELS	12108-11	NITRILE
40	HEX NUT (1/4" - 20)	6	ALL MODELS	12600-26	SS
41	INTERMEDIATE ZINC COATED FOR ATEX	1 OPT	ALL MODELS -X45 MODELS	11524-60 11524-84	POLYPRO POLYPRO
42	O-RING (End Spacer)	2	ALL MODELS	11919-11	NITRILE
43	LIP SEAL (Air Valve)	2	ALL MODELS	12003-76	NITRILE
44	O-RING (Valve Plug)	1	ALL MODELS	11913-11	NITRILE
45	END SPACER (Pilot Sleeve)	2	ALL MODELS	10206-40	POLYPRO
46	RETAINING PLATE	2	ALL MODELS	12709-54	NYLON
47	FLAT WASHER	2	ALL MODELS	12315-25	SS
48	INNER SPACER (Pilot Sleeve)	3	ALL MODELS	10205-40	POLYPRO
49	DIAPHRAGM ROD (Long)	1	ALL MODELS	*	SS
50	SCREW (#8 X 3/4")	6	ALL MODELS	12540-26	SS
51	SCREW LUG - GROUNDING	1 (OPT)	-X45 MODELS	13416-25	PS

*** DIAPHRAGM ROD AVAILABLE ONLY AS AN ASSEMBLY**

DIAPHRAGM ROD ASSEMBLY	QTY PER PUMP	PUMP MODELS	PART NUMBER	MATERIAL
Includes items 34 and 49	1	ALL MODELS	35000-00	SS

OPTIONAL ASSEMBLIES AVAILABLE

AIR VALVE ASSEMBLY	QTY PER PUMP	PUMP MODELS	PART NUMBER	MATERIAL
Includes items 1 thru 7, 43, 44	1	ALL MODELS	47000-60	POLYPRO
PILOT SLEEVE ASSEMBLY	QTY PER PUMP	PUMP MODELS	PART NUMBER	MATERIAL
Includes items 13, 14, 15, 42, 45, 48	1	ALL MODELS	46000-00	VARIOUS
REPAIR KITS - WET END	QTY PER PUMP	PUMP MODELS	PART NUMBER	MATERIAL
Includes items 24, 26, 27, 31 & (30 - Used in pumps built w/ PTFE) To order a wet end repair kit, add "KIT" to the pump model. e.g. AB-15 KIT				

NOTES:

1. PS = PLATED STEEL, SS = STAINLESS STEEL, AL = ALUMINUM