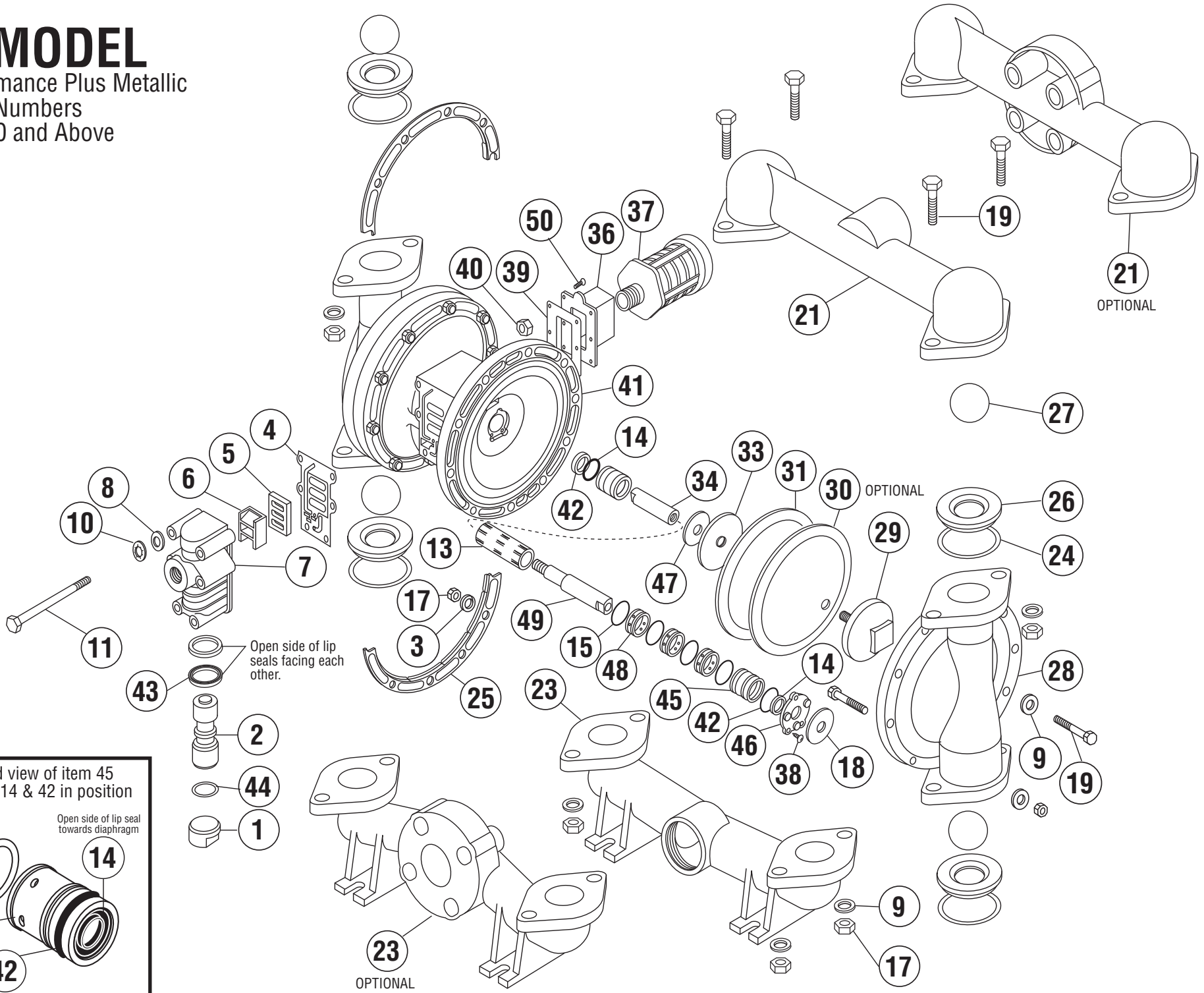
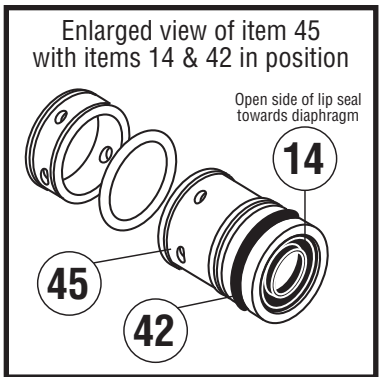


2" MODEL

Performance Plus Metallic
Serial Numbers
143700 and Above



Open side of lip seals facing each other.



2" PERFORMANCE PLUS METALLIC MODELS

JANUARY 2008

ITEM	DESCRIPTION	QTY PER PUMP	PUMP MODELS	PART NUMBER	MATERIAL
1	AIR VALVE END PLUG	1	ALL MODELS	11703-60	POLYPRO
2	AIR VALVE SPOOL	1	ALL MODELS	10481-31	ACETAL
3	COMPRESSION WASHER	20	ALL MODELS	12319-26	SS
4	AIR VALVE GASKET	1	ALL MODELS	12121-19	NITRILE
5	SHUTTLE PLATE	1	ALL MODELS	10450-77	CERAMIC
6	SHUTTLE	1	ALL MODELS	10430-00	SPECIAL
7	AIR VALVE BODY	1	ALL MODELS	11617-60	POLYPRO
8	FLAT WASHER	6	ALL MODELS	12300-26	SS
9	FLAT WASHER	28	ALL MODELS	12306-26	SS
10	LOCK WASHER (1/4")	6	ALL MODELS	12350-26	SS
11	CAP SCREW (1/4" X 6")	6	ALL MODELS	12515-26	SS
13	PILOT SLEEVE	1	ALL MODELS	10106-31	ACETAL
14	LIP SEAL (Diaphragm Rod)	2	ALL MODELS	12002-76	NITRILE
15	O-RING (Pilot Sleeve)	4	ALL MODELS	11919-16	URETHANE
17	HEX NUT (1/2" - 13)	28	ALL MODELS	12604-26	SS
18	BUMPER	2	ALL MODELS	12317-16	URETHANE
19	CAP SCREW (1/2" X 2-1/2")	28	ALL MODELS	12522-26	SS
21	DISCHARGE MANIFOLD, THREADED NPT	1	AB, AE, AT	10539-20	AL
	DISCHARGE MANIFOLD, THREADED BSP		-P15 MODELS	10540-20	AL
	DISCHARGE MANIFOLD, FLANGED	OPT	-P30 MODELS	10524-20	AL
	DISCHARGE MANIFOLD, THREADED NPT		SB, SE, SP	10586-26	316 SS
	DISCHARGE MANIFOLD, THREADED BSP	OPT	-P15 MODELS	10587-26	316 SS
	DISCHARGE MANIFOLD, FLANGED		-P30 MODELS	10524-26	316 SS
DISCHARGE MANIFOLD, TRI-CLAMPED	OPT	-X44 MODELS	10577-26	316 SS	
23	SUCTION MANIFOLD, THREADED NPT	1	AB, AE, AT	10536-20	AL
	SUCTION MANIFOLD, THREADED BSP		-P15 MODELS	10537-20	AL
	SUCTION MANIFOLD, FLANGED	OPT	-P30 MODELS	10518-20	AL
	SUCTION MANIFOLD, THREADED NPT		SB, SE, SP	10588-26	316 SS
	SUCTION MANIFOLD, THREADED BSP	OPT	-P15 MODELS	10589-26	316 SS
	SUCTION MANIFOLD, FLANGED		-P30 MODELS	10518-26	316 SS
	SUCTION MANIFOLD, TRI-CLAMPED	OPT	-X44 MODELS	10578-26	316 SS
24	O-RING (Valve Seat)	4	AB, SB	11926-11	NITRILE
			AT, SP	11926-17	PTFE
			AE, SE	11926-15	EPDM
25	POWER RING (Set)	2	ALL MODELS	12812-26SET	SS
26	VALVE SEAT	4	AB, AE	10918-40	POLYPRO
			AT	10918-42	NYLON
			SB, SE, SP	10918-26	316 SS
27	BALL	4	AB, SB	11004-11	GEOLAST
			AT, SP	11004-45	PTFE
			AE, SE	11004-23	SANTO
			HIGH VISCOSITY	11004-22	NITRILE
	BALL, HEAVY WEIGHT	OPT	ALL MODELS	11004-26	SS

ITEM	DESCRIPTION	QTY PER PUMP	PUMP MODELS	PART NUMBER	MATERIAL
28	OUTER CHAMBER	2	AB, AE, AT SB, SE, SP	10724-20 10724-26	AL 316 SS
29	OUTER DIAPHRAGM PLATE	2	AB, AE, AT SB, SE, SP	11211-20 11211-26	AL 316 SS
30	OVERLAY	2	AT, SP	11403-59	PTFE
31	DIAPHRAGM	2	AB, SB	10603-19	GEOLAST
		OPT	ALL OTHERS -X45 MODELS	10603-23 10603-86	SANTO COND. SANTO
33	INNER DIAPHRAGM PLATE	2	ALL MODELS	11103-25	PS
34	DIAPHRAGM ROD (Short)	1	ALL MODELS	*	SS
36	MUFFLER PLATE	1	ALL MODELS	13107-60	POLYPRO
37	EXTERNAL MUFFLER	1	ALL MODELS	13001-00	SPECIAL
38	SCREW (#6 X 3/4")	6	ALL MODELS	12549-26	SS
39	GASKET (Muffler Plate)	1	ALL MODELS	12108-11	NITRILE
40	HEX NUT (1/4" - 20)	6	ALL MODELS	12600-26	SS
		1	ALL MODELS	11524-60	POLYPRO
41	INTERMEDIATE ZINC COATED FOR ATEX	1	ALL MODELS	11524-60	POLYPRO
		OPT	-X45 MODELS	11524-84	POLYPRO
42	O-RING (End Spacer)	2	ALL MODELS	11919-11	NITRILE
43	LIP SEAL (Air Valve)	2	ALL MODELS	12003-76	NITRILE
44	O-RING (Valve Plug)	1	ALL MODELS	11913-11	NITRILE
45	END SPACER (Pilot Sleeve)	2	ALL MODELS	10206-40	POLYPRO
46	RETAINING PLATE	2	ALL MODELS	12709-54	NYLON
47	FLAT WASHER	2	ALL MODELS	12315-25	PS
48	INNER SPACER (Pilot Sleeve)	3	ALL MODELS	10205-40	POLYPRO
49	DIAPHRAGM ROD (Long)	1	ALL MODELS	*	SS
50	SCREW (#8 X 3/4")	6	ALL MODELS	12540-26	SS
51	SCREW LUG - GROUNDING	1 (OPT)	-X45 MODELS	13416-25	PS

*** DIAPHRAGM ROD AVAILABLE ONLY AS AN ASSEMBLY**

DIAPHRAGM ROD ASSEMBLY	1	ALL MODELS	35000-00	SS
Includes items 34 and 49				

OPTIONAL ASSEMBLIES

AIR VALVE ASSEMBLY	1	ALL MODELS	47000-60	VARIOUS
Includes items 1 thru 7, 43, 44				
PILOT SLEEVE ASSEMBLY	1	ALL MODELS	46000-00	VARIOUS
Includes items 13, 14, 15, 42, 45, 48				
REPAIR KITS - WET END				
Includes items 24, 26, 27, 31 & (30 - Used in pumps built w/ PTFE)				
To order a wet end repair kit, add "KIT" to the pump model. e.g. AL-20 KIT				

NOTE:

1. PS = PLATE STEEL, SS = STAINLESS STEEL, AL = ALUMINUM